



**Kel-Berg Transit  
Mixer Installation**

**Model  
KBM/3/26**

### Drum Specification:

Drum Shell	3mm Swedish Steel
Rated Capacity m <sup>3</sup>	6 m <sup>3</sup>
Dished End Cone	5mm
Dished End	3mm
Neck Cone	3mm
Mouth Cone	3mm
Blades	3mm
Blade Spacing	
Blade Depth	
Capping	3x30mm

### Structure:

- **Sub-Frame** Full length, high tensile section (size 150x75x8 mm) to match chassis width and internally welded front & rear support U-Bolt mountings. Ensures that focus is applied dynamically in the mixer frame. U Bolts can be easily changed.
- **Body Mounts** Rigidly fixed plates will be welded into position for local bolting to the truck chassis.
- **Rollers** Steel Wheel (280 x 90 x 35 mm) with Timken case hardened IBS bearings. Rollers and track ring can be greased at front ground level via remote greasing point manifold.

### Photos:



### Mixer Drive-Line:

- **PTO** GKN shaft from auxiliary drive PCE, 687.15 Series, 670mm W/L, 100 mm DIN Flanges, 6 X M8 Bolt Holes
- **Pump** PMH P90 Pump. Maximum Pressure 450 bar. Axial pistons and variable flow pump. 89.5 cm<sup>3</sup> / 89.5cc capacity
- **Motor** PMH M90 Hydraulic Pump. 89.5 cm<sup>3</sup> / 89.5cc displacement. Fixed Flow
- **Gearbox** PMP B6.5 1202.4 hydraulic pump drives the water pump via a shear coupling.
- **Cooler** ASA oil cooler with temperature control via 59° thermostat, 20 L oil reservoir and filter
- **Oils** Hydraulic: SAE7580  
Gearbox: SAE85W90

### Rear Control Station:

- **Engine** The mixer is controlled via cable located both at the rear & incab. Engine revs controlled by push buttons.
- **Slumping** 3" hydraulic pressure gauge mounted in rear control panel to provide indication of slump.

### Photos:



- **Water** 1" BSP stainless steel control valve and batching meter.
- **Other** Any other additional options

### Mixer Drive-Line:

- **PTO** GKN shaft from auxiliary drive PCE, 687.15 Series, 670mm W/L, 100 mm DIN Flanges, 6 X M8 Bolt Holes
- **Pump** PMH P90 Pump. Maximum Pressure 450 bar. Axial pistons and variable flow pump. 89.5 cm<sup>3</sup> / 89.5cc capacity
- **Motor** PMH M90 Hydraulic Pump. 89.5 cm<sup>3</sup> / 89.5cc displacement. Fixed Flow
- **Gearbox** PMP B6.5 1202.4 hydraulic pump drives the water pump via a shear coupling.
- **Cooler** ASA oil cooler with temperature control via 59° thermostat, 20 L oil reservoir and filter
- **Oils** Hydraulic: SAE7580  
Gearbox: SAE85W90

### Rear Control Station:

- **Engine** The mixer is controlled via cable located both at the rear & incab. Engine revs controlled by push buttons.
- **Slumping** 3" hydraulic pressure gauge mounted in rear control panel to provide indication of slump.

### Photos:



- **Water** 1" BSP stainless steel control valve and batching meter.
- **Other** Any other additional options

### Water System

- **Tank Size** 400 Litre maximum capacity aluminium tank with external sight glass.
- **Pump** Direct drive centrifugal pump driven by mixer gearbox PTO featuring sacrificial shear coupling to protect mixer gearbox in the event of frost.
- **Meter** 1-1/4" Maddalena BSP, brass flow-meter with analogue display and reset facility. Each end connected with quick release for ease of change.
- **Valves** 1-1/2" BSP stainless steel ball valves, robust with improved stem seal and rugged steel handle
- **Drain Point** 1/4" BSP stainless steel ball valve at front, middle and rear. Rear and middle to drain whole system. Front is low and drains pump.
- **Wash Off** 3/4" hoses with brass nosed to rear at ground level and at ladder platform
- **Tank Fill** One nearside, one off side front with compressed air style claw coupling.

### Photos:



### Chutes & Hoppers

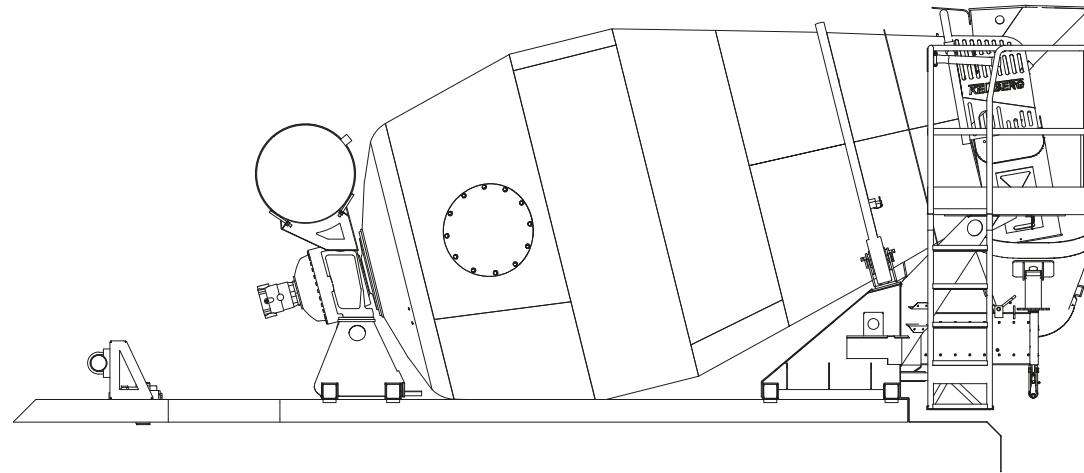
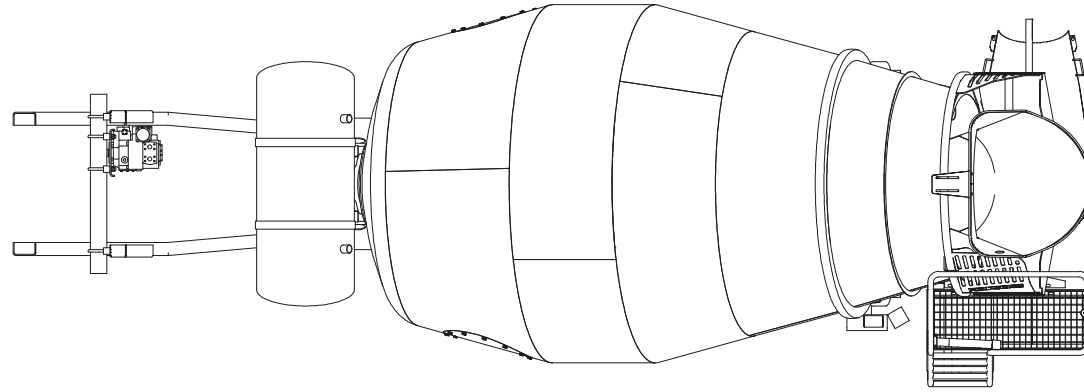
- **Charge** Single steel piece high flow with wear plate
- **Discharge** High capacity discharge hopper with wear liner
- **Pan-Chute** 3 mm (130cm long) pan chute with wear liner
- **Spares** 2 spare plastic chutes which are mounted on top of mudwings each side.
- **Chute Actuation** Mechanical screw jack ram for rise and fall of pan-chute with manual rotation with clamping lock.



### Body Fittings

- **Ladder** Fixed ladder gives access to wide platform and features anti-slip rungs. Pull out to lower ladder.
- **Platform** Large anti-slip platform with step to right and handrail with auto close anti-fall back barrier.
- **Mudwings** Three piece thermo-plastic / galvanised steel combination with gloss finish for easy cleaning.
- **Sideguards** Bolt on galvanised channel with hinged legs and anodised aluminium side rails. Type Approved
- **Warning Signs** Warning badges for "cement burns" , "authorised operator only" , "rotating parts" etc





### Water System

- **Tank Size** 400 Litre maximum capacity aluminium tank with external sight glass.
- **Pump** Direct drive centrifugal pump driven by mixer gearbox PTO featuring sacrificial shear coupling to protect mixer gearbox in the event of frost.
- **Meter** 1-1/4" Maddalena BSP, brass flow-meter with analogue display and reset facility. Each end connected with quick release for ease of change.
- **Valves** 1-1/2" BSP stainless steel ball valves, robust with improved stem seal and rugged steel handle
- **Drain Point** 1/4" BSP stainless steel ball valve at front, middle and rear. Rear and middle to drain whole system. Front is low and drains pump.
- **Wash Off** 3/4" hoses with brass nosed to rear at ground level and at ladder platform
- **Tank Fill** One nearside, one off side front with compressed air style claw coupling.

### Photos:





### Chutes & Hoppers

- **Charge** Single steel piece high flow with wear plate
- **Discharge** High capacity discharge hopper with wear liner
- **Pan-Chute** 3 mm (130cm long) pan chute with wear liner
- **Spares** 2 spare plastic chutes which are mounted on top of mudwings each side.
- **Chute Actuation** Mechanical screw jack ram for rise and fall of pan-chute with manual rotation with clamping lock.



### Body Fittings

- **Ladder** Fixed ladder gives access to wide platform and features anti-slip rungs. Pull out to lower ladder.
- **Platform** Large anti-slip platform with step to right and handrail with auto close anti-fall back barrier.
- **Mudwings** Three piece thermo-plastic / galvanised steel combination with gloss finish for easy cleaning.
- **Sideguards** Bolt on galvanised channel with hinged legs and anodised aluminium side rails. Type Approved
- **Warning Signs** Warning badges for "cement burns" , "authorised operator only" , "rotating parts" etc

