



**KEL-BERG TRANSIT
CONCRETE MIXER**

**KBM/3/32 8M³ MIXER
DAF SLEEPER INSTALLATION**

CHASSIS SPECIFICATION

Ver.5 | Issued
03/23

KEL-BERG KBM/3/32 TRANSIT CONCRETE MIXER INSTALLATION

Make / Model:

DAF CF450 FAD 8x4 Rigid Mixer Construction Chassis N3G

Driveline:

Drive line is fitted with a 10.8 litre, 6 cylinder diesel Euro MX-11 engine:

- Output: 320kW at 1450 to 1700 rpm
- Max Torque: 2100 Nm at 900 to 1125 rpm

Also features an auto Traxon 12 speed ZF 12TX2610 OD gearbox, mechanical cross-axle & inter-axle differential lock, and ASR (anti-slip control).

Cab External Features:

Green translucent external sun visor.

Galvanised steel bumper.

Tinted glass.

Electric operated side windows.

4-point mechanical cab suspension and integrated shock absorbers.

Central door locking system with exterior light checker function.

Electrical adjustment of main mirror and wide angle mirror.

Daytime running lights with four LEDs at each side.

Double glassed window in the cab rear wall.

Colour:

Cab is finished in H3729 white. Headlamp surround and bumper are white also. Mirror covers and chassis finished in grey.



Cab Interior:

Interior is finished with black rock and dark sand trim. The driver seat is air suspended with high back and comfort air. Upholstery is flash copper with black seat belts. Climate control automatically regulates cab temperature.

Radio / USB player, truck phone, hands-free kit with SIM card slot, Bluetooth antenna and two USB charging points also included. A 5" TFT display is fitted in the instrument panel with driver performance assistant (DPA). Stoneridge or VDO digital tachograph fitted.

A sleeping compartment with lower bunk is raised 135 mm above the engine tunnel. 3 opening storage facilities are fitted under the bunk. These can be accessed by tilting the bunk. Lower bunk has a standard foam mattress. Curtains cover windscreen and side windows.

A 3.8 kw water to air night heater with residual heat pump with control panel and 7 day timer is fitted. Aluminium roof hatch with manual control.

Chassis:

Chassis is 310 mm x 6 mm steel with full length inner reinforcement. Exhaust is a single low horizontal DPF & SCR unit with diffuser positioned behind the second front axle on the driver's side. 220 L aluminium fuel tank is located on N/S and 45 L AdBlue tank. Wheel base is 5700 mm with 1530 mm.



Braking System:

Fitted with ventilated disk brakes on the front and rear axles and dual circuit air system with electronic control (EBS). Also features air compressor with heated dryer, exhaust brake and park brake control, spring brake cylinder on front and rear axle.

Axles & Suspension:

Front axle type: 167 N vertical offset at 20 mm. Parabolic leaf suspension with shock absorbers and stabilisers:
Max Load - 7.1 tons x 2

Rear axle type: SR1132T with single reduction. Trapezium leaf suspension: Max Load - 9.5 tons x 2

Rear spring max load 19 tons. Brake system design load 19 tons.

Wheels & Tyres:

Alcoa aluminium machine finished wheel rims.

Front and rear axles:

- Tyre size: 295/80R22.5
- Wheel rim size: 22.5 x 8.25

Wheel protection rings with centre section finished in silver grey. Tyres premium make. On/off road tread pattern.

Electrical Power Supply:

Alternator 80 A (2 x 175 Ah batteries)
Rear light units LED

PTO:

Rear engine PTO at position 13 hours, flange 100 mm. Analogue gearbox PTO control.

GVC & GCM:

Chassis weight related technical GVM max - 32,000 kg
Driveline related max GCM 32,000 kg (Class 2)

Warranty:

2 year chassis cab and 3rd year driveline. This takes care of all warrantable repairs on the vehicle for the first two years and on the driveline for this year together with associated breakdown coverage.

Service & Maintenance:

Two options are available at additional monthly cost:

1. Compliance package
2. Full R&M package

Please ask for full details and monthly costs.

Drum Specification:

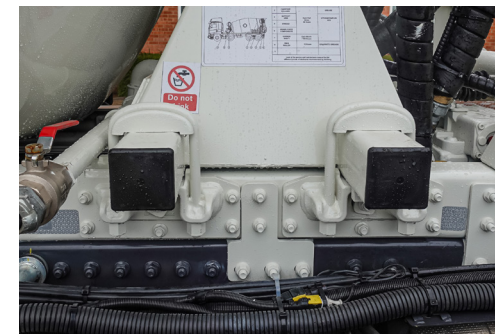
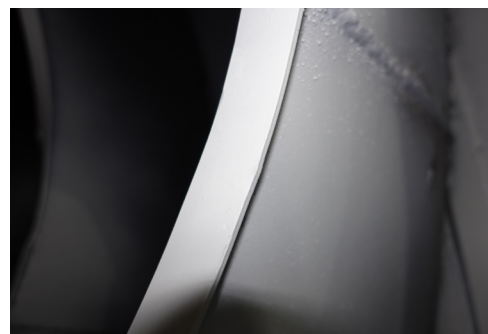
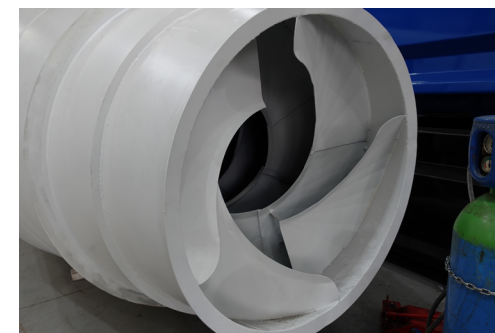
Drum shell:	3 mm Swedish Steel
Rated capacity:	8 m ³ / 9 m ³
Dished end cone:	5 mm
Dished end:	3 mm
Neck cone:	3 mm
Mouth cone:	3 mm
Blades:	3 mm
Blade spacing:	950 mm
Blade depth:	495 mm
Capping:	3 x 30 mm

Structure:

The sub-frame is full length with a high tensile steel section (150 x 75 x 8 mm) to match the chassis width. Also features internally welded front and rear support U-bolts which ensure force is applied dynamically throughout the mixer frame.

Body mounts are rigidly fixed plates that are welded into position for local bolting to the truck chassis. Rollers use steel wheels (280 x 90 x 35 mm) with Timken case hardened bearings. Rollers and track rings can be greased at ground level via remote greasing point.

Vehicle Total Height:	12 ft 2 inch
Standard Mixer Install Height:	12 ft
Cutout Hopper Height:	11 ft 4 inch



Mixer Driveline:

PTO uses a GKN shaft via auxiliary drive PCE:

- 687.15 series
- 670mm W/L
- 100 mm DIN flanges
- 6 x M8 Bolt holes

Fitted with a PMH P90 pump with a maximum pressure of 450 bar. This features axial pistons and variable flow - 89.5 cm^3 / 89.5 cc capacity. Motor is a PMH M90 hydraulic fixed flow pump - 89.5 cm^3 / 89.5 cc displacement.

Gearbox is a PMP B6.5 1202.4 hydraulic pump which drives the water pump via a shear coupling. Oil is cooled using ASA oil cooler with temperature control via 59° thermostat - 20 L oil reservoir and filter.

Oils:

Hydraulic: ISO 46 Hydraulic Oil

Gearbox: SAE85W90

Rear Control Station:

The mixer is controlled via a cable located both at the rear and in cab. Engine revs are controlled using push buttons. A 3" hydraulic pressure gauge mounted on rear control panel provides indication of slump. Water is controlled using a 1" BSP stainless steel control valve and batching metre.



Water System:

The water tanks maximum capacity is 400 L and features an external sight glass. Water is pumped using a direct drive centrifugal pump which is driven using a PTO. A sacrificial sheer coupling is used to protect the gearbox in the event of frost.

A 1^{1/4}" Maddalena BSP brass flow metre with analogue display and reset facility is fitted to rear control station. Each end is connected with a quick release for easy changes.

1^{1/2}" BSP stainless steel ball valves are fitted. These are robust and have an improved stem seal with rugged steel handle.

1/4" BSP stainless steel ball valve located at front, middle and rear. Rear and middle valves drain entire system. Front valve is low to ground and drains pump.

3/4" hoses with brass nose located at rear ground level and platform for wash off.

Tank fills valves are located on front O/S and N/S with claw style compressed air coupling.



Chutes & Hoppers:

Charge hopper is a single piece of steel with high flow design and wear plate. Discharge hopper is a high capacity design with wear liner. A 3 mm (130 cm) pan chute is fitted with a wear liner.

Two spare plastic chutes are mounted on top of mudwings each side of installation. Chute is actuated using mechanical screw jack ram for raise and lower with manual rotation and locking clamp.

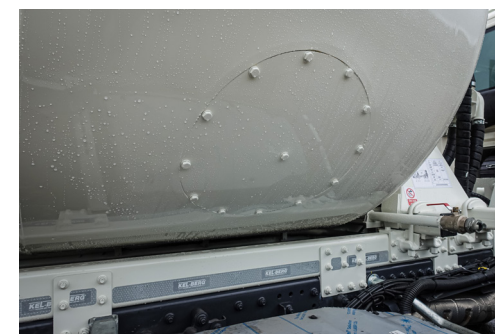
Body Fittings:

A fixed ladder gives access to wide platform and features anti-slip rungs. Pull out ladder to lower. The platform incorporates a large anti-slip design with step to right and handrail with auto close anti-fall back barrier.

Mudwings are a three piece thermo plastic and galvanised steel combination with gloss finish for easy cleaning. Galvanised side guards are bolted on with hinged legs and anodised aluminium side rails.

A variety of warning badges are placed on the vehicle including “cement burns”, “authorised operator only”, “rotator parts”, etc.

We have full Whole Vehicle Type Approval (WVTA) for our mixers.

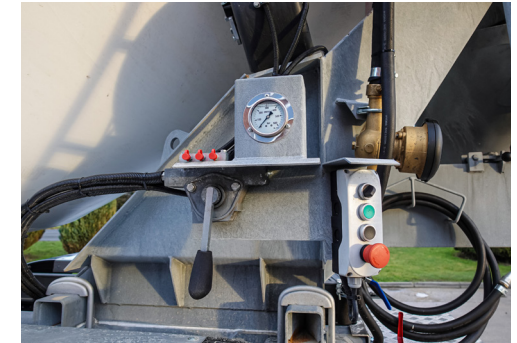


Anti-Corrosion Protection:

An arc spraying metallisation process is used to coat the installation in molten zinc that protects the steel from corrosion. This is achieved by melting zinc wire with an electric arc which is then atomised using compressed air and propelled towards the metalwork. The molten spray solidifies immediately, mechanically bonding to the roughened steel to form a dense, strongly adherent coating providing excellent corrosion protection.

Arc spraying metallization is able to withstand the harsh cleaning chemicals used in mixer cleaning, ensuring that the installation remains protected and its structural integrity is not compromised during its long service life.

This does not include the mixer drum or aluminium water tank.



MIXER SPECIFICATION

Ver.5 | Issued
03/23

KEL-BERG KBM/3/32 TRANSIT CONCRETE MIXER INSTALLATION

Costed Optional Extras:

Most major concrete franchises require some costed extras which we can supply. These include:

- 6 kg fire extinguisher
- Additional LED work lights
- Kerb view cameras instead of lower door window
- Franchise liveries
- Away Wash System
- Additional camera systems and side scan systems
- Caution boards
- Hopper cutout for increased headroom

