



**STERLING  
CRANE TRUCK**

**VOLVO FH460 8x2 STERLING  
CHEESEWEDGE PK48 CRANE TRUCK**

# CHASSIS SPECIFICATION

Issued  
October 2023

## VOLVO FH460 8x2 STERLING PK48 CRANE TRUCK

### Make / Model:

Volvo FH 460 8x2 Rigid N3 High Chassis

### Driveline:

Drive line is fitted with a 12.8 litre, Euro 6 Diesel D13K460 Engine:

- Outputs: 460 hp at 1400 - 1800 rpm
- Peak Torque: 2300 Nm at 900 – 1400 rpm

Also features an auto AT2612 12-speed “I-Shift” gearbox, application software – Construction and off-road. I-Shift economy mode with automatic power shift return.

### Cab External Features:

- Smoke grey sun visor
- Plastic bumper
- Remote central door locking
- Tinted cab windows
- Insect screen in front of radiator
- Halogen headlamps
- Electrically heated and operated main and wide-angle mirrors
- Manual passenger kerb view mirror
- Spot lamps and front fog lights
- Day time running lights
- Front & rear mechanical spring cab suspension
- Roof mounted air intake
- Rear LED Lights





# CHASSIS SPECIFICATION

Issued  
October 2023

## VOLVO FH460 8x2 STERLING PK48 CRANE TRUCK

### Colour:

Cab is finished in 1103WHITE Winter White. Grille painted in cab colour. Instep, bumper, door handles, and mirror housing finished in grey. Aluminium step inserts.

### Cab Interior:

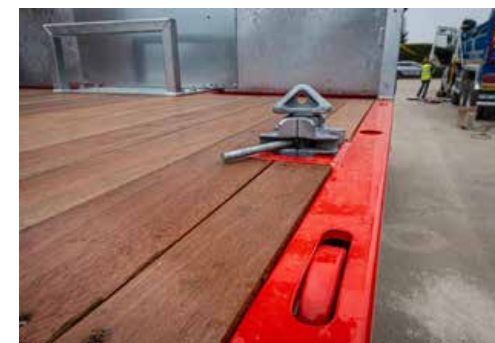
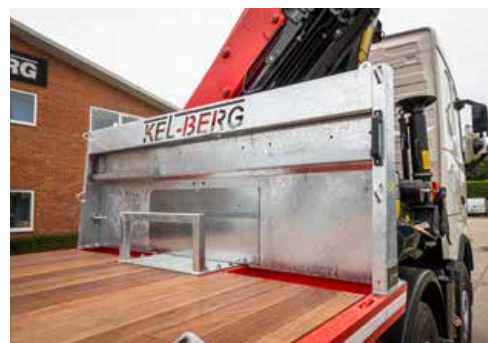
Continental VDO 4.0 Tachograph  
Thatcham H2 Approved Immobiliser  
Dash finished in vinyl raven, blue, and grey  
Reverse alarm, 3 kg fire extinguisher  
In cab smoke detector  
Adjustable steering wheel  
Cruise control  
Electric climate control with sun sensor  
DAB radio + AM/FM

Manually operated tinted glass roof escape hatch, rear cab upper storage, 33 L fridge under bunk with freezer dividers, 1.8kw Air to Air parking heater.

Six speakers in dashboard, doors and sleeping area. There are two cup holders, one in centre dash and one under the bunk. Also features 3 USB Communication ports.

Fitted with lower bunk with wide middle section 815 mm x 2000 mm. Also as 35 mm thick mattress protector.

Dashboard features a high performance 12" dynamic instrument cluster.



# CHASSIS SPECIFICATION

Issued  
October 2023

## VOLVO FH460 8x2 STERLING PK48 CRANE TRUCK

### Chassis:

Chassis is 300 mm x 8 mm steel web and flange. Chassis frame inner liner from front of boogie to the end of the frame. Exhaust is fitted with horizontal silencer and rear outlet. A 450 L aluminium fuel tank is fitted to OS and a 64 L plastic AdBlue tank is fitted the NS. Both are complete with locking cap. Wheelbase is 6000 mm with 1867 mm overhang.

### Brake System:

Features solid disc brakes with EBS system. Fitted with Volvo Engine brake and exhaust pressure governor. Enhanced performance is provided from the additional exhaust rocker control. EBS Medium, "Hill" hold function.

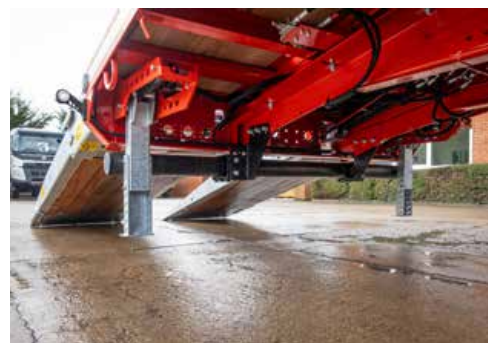
### Axles & Suspension:

Front Axle Type – 2 leaf parabolic springs. Design capacity – 18 tonnes – 2 x 9 tonne front axles. Anti-roll bar – High Stiffness. Maintenance – Maintenance free.

Rear Axle Type – Air Suspension. Rear boogie design capacity – 19 tonne. Anti-roll bar – Medium Stiffness

Tag Axle – Design Capacity – 7.5 tonne

Drive Axle Type – RSS1370A single reduction 13 with differential lock. Drive Axle Ratio – 2.64:1.





# CHASSIS SPECIFICATION

Issued  
October 2023

## VOLVO FH460 8x2 STERLING PK48 CRANE TRUCK

### Wheels & Tyres:

Steel Rim Wheels

Front Axle	385/65R22.25 Bridgestone Duravis R-Steer 002 – Regional Steer Pattern B-Rated Rolling Resistance
Rear Axle	315/80R22.5 Bridgestone Duravis R-Steer 002 – Regional Steer Pattern C-Rated Rolling Resistance
Tag Axle	385/35R22.5 Bridgestone M Steer – on/off road All-round Pattern C-Rated Rolling Resistance

Basic tool kit included.

### Electric Power Supply:

Alternator 150 A, 2 x 210 Ah batteries. Battery box mounted on NS with battery master toggle switch.

### GVC & GCM

GCW: 70,000 kg

### Service & Maintenance:

Two options are available at additional monthly cost

Option 1) Compliance package

Option 2) Full R&M Package

Please ask for a full details or a monthly cost.



### Body Description:

The body is approximately 8 m long (built to maximum legal length) and is built to 32 ton spec. It is a fully welded interlaced steel construction with cross members spaced at 400 mm. The low profile under frame allows for minimum deck height. Angled heavy duty side rails – 10 mm thick.

- Recessed lashing rings are set in to top of side rail – 8 each side.
- Heavy duty lashing rings under side rails for chains – 8 each side.
- Rope hooks are fitted to every cross member.

Single bends in beavertail allow for minimum loading angle (approximately 12° - 14°). 28 mm hardwood is finished with timber sealant to prevent water ingress. Headboard is 1.2 metre high and is constructed with heavy duty steel with KEL-BERG profile cut into it. Chain bar also fitted.

LED marker lights, spray suppression and side guards all fitted to meet current legislation. Body is shot blasted and cleaned, then painted in two pack paint to customer colour of choice. Ramps and headboard to be finished in hot dip galvanised. One powdered coated steel tool box is fitted to the side of the body. Recessed tool trays are fitted either side of winch plates.

2.5M x 1.0M fold forward Mega wedge hydraulic ramps fitted to the rear of the body. Ramps powered by an electro hydraulic power pack mounted in a weather proof box. Check valves fitted to rams to guard against hose failure.



## BODY SPECIFICATION

Issued  
October 2023

## VOLVO FH460 8x2 STERLING PK48 CRANE TRUCK

Rear steady legs powered by hydraulic rams with auto lower. Winch plate fitted to allow winch to be retro fitted. Pull-out step and grab handle fitted to the front nearside.

Conspicuity tape fitted to the side and rear of the body. One pair of twist locks fitted to the front of the body. Sockets set into the deck to provide facility for a handrail to be fitted at a later date. WVTa Included.

### Crane Description:

Fitted with Palfinger PK48002EH D BOOM (Classification according to EN12999:HC1 HD4/B3).

- Lifting moment: 46.5 mt / 456.3 KNm (31.1 mts)
- Slewing angle: 400°
- Estimated dead weight: 4420 Kgs

### Lifting capacity:

- 10,200 kg @ 4.1 m
- 7,200 kg @ 5.9 m
- 5,400 kg @ 7.7 m
- 4,200 kg @ 9.6 m
- 2,850 kg @ 13.8 m

Crane has 5 hydraulic boom extension sections from 7.7 m to 13.8 m (including geometry control). Crane is also fitted with Paltronic 50 rated capacity indicator with overload protection and emergency cut-off + hour counter.

There are two lateral and vertical hydraulically extended stabiliser jacks of rigid design, with pilot operated non-return valves. Maximum stabiliser spread – 7.8 m (R3X) + tillable footplate.

Crane can be operated using box level on each side of crane, or using 4 function radio remote (PALFINGER/DANFOSS) with linear control levers + 4 element control valve with LED display on handset. Emergency control can be found on crane column.

