



**KEL-BERG GRAB  
LOADER**

**SCANIA P460 XT 8x4 KEL-BERG GRAB  
LOADER**



# CHASSIS SPECIFICATION

Ver.1 | Issued  
08/24

## SCANIA P460 XT 8x4 KEL-BERG GRAB LOADER

### Make / Model:

Scania P460 B8x4HZ XT Chassis

### Driveline:

Fitted with 13 litre, straight 6 cylinder Euro 6 DC13 175 engine.

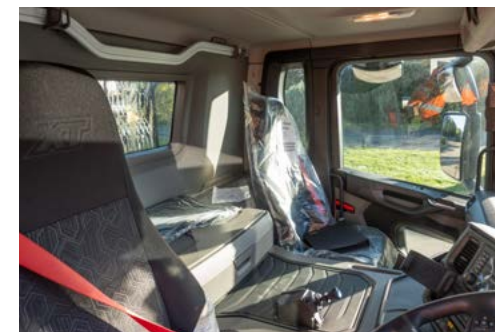
- Outputs 338 kW (460 hp) at 1,800 rpm
- Max Torque 2,500 Nm at 900 – 1,290 rpm

Engine equipped with double overhead camshafts, 4 valves per cylinder, turbocharger, and Twin-SCR exhaust after treatment system.

Fitted with automatic G25CM1 14 speed range-splitter gearbox, including crawler gear and overdrive. Includes diff lock. Equipped with Opticruise system with performance modes economy, standard, off-road.

### Cab External Features:

- External sun visor
- LED headlamps
- Daytime running lights
- Reverse buzzer
- Spotlights and fog lamps
- Lower door window, passenger window does not open.
- Rear cab window
- Heated and electrically operated rear, close proximity, and rear view mirrors.



- Remote central door locking
- Immobiliser
- Smoke detector

### Cab External Features:

- Cab Ivory White
- Chassis Red
- Bumper Blue
- Front grille Black charcoal
- Sun visor Cab colour

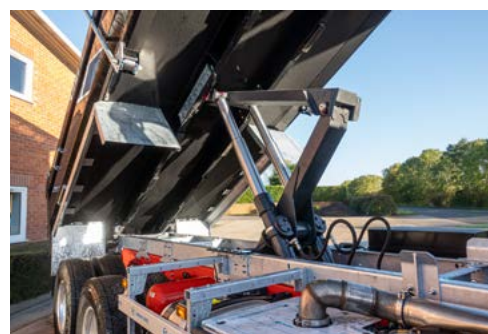
### Cab Interior Features:

Cab is CP17L day cab model with low roof height. It offers a spacious driver area with good storage. The cab has a wide and practical boarding steps which make it easy to enter and exit the cab.

Driver seat is heated with adjustable shock absorber. Driver side window features manual sun blind. Foot wells have rubber floor mats. Both seats with XT upholstery and red seatbelts. Steering wheel is tilt and slide adjustable, finished in basic upholstery with chrome details.

Fitted with infotainment system, featuring navigation and Bluetooth connection. Cab is air conditioned with manual climate control. Drawer storage on rear wall, and external storage compartment on passenger side. Fitted with Stoneridge Smart 2 Tachograph.

All new vehicles activate on Scania Connected Services.





### Chassis:

Wheelbase is 5,150 mm with 2,160 mm overhang. Fitted with vertical exhaust. Chassis wheel configuration 8x4, chassis height, high. Batteries positioned on left handside. 200 L aluminium fuel tank fitted to right side.

### Brake System:

Features disc brakes with electronic brake control, including ABS and traction-control. Brake control is electronic and disc brake combination. Equipped with hill hold function. Exhaust brake control is manual and automatic.

### Brake System:

Front suspension type 3x29 parabolic. Front spring bushing is rubber. Front axle design capacity 2 x 7,500 kg.

Rear suspension type 4x41 parabolic, leaf suspension system. Rear axle design weight 21,000 kg (10,500 + 10,500 kg).

Fitted with anti-roll bar at front with normal stiffness.

### Brake System:

- Front Axle 315/80R22.5 22.5 x 9.00
- Rear Axle 315/80R22.5 22.5 x 9.00

Fitted with Alcoa aluminium DuraBright wheels.



### Safety & Security:

The vehicle is fitted with a several safety systems in accordance with General Safety Regulations.

- Emergency braking indication.
- Vulnerable road user collision warning on left hand side.
- Vulnerable road user collision warning in front.
- Alcolock system preparation.
- Tyre pressure monitoring system.

### Electrical Power Supply:

Alternator 100 A, Batteries 180 Ah

### Power Take Off (PTO):

Fitted with rear PTO EG. Type EG10R DCP1B.

### GVC & GCM:

GVW max 32,000 kg

### Warranty:

1 year warranty on chassis. This takes care of all warrantable repairs on the vehicle for 1 year.

Additional warranty available at extra cost.

### Service & Maintenance:

Two options are available at additional monthly cost:

Option 1) Compliance package

Option 2) Full R&M Package

Please ask for a full details or a monthly cost.

## Body Construction:

The body is constructed with durable and hard wearing pressed abrasive resistant steel, suitable for muck-away, demolition rubble and aggregate.

The sides are fixed and pressed from 4 mm abrasive resistant steel, along with heavy duty top rails which are folded from the same steel; giving the body exceptional strength. The floor is a single 5 mm steel sheet with angled edges to the side wall, preventing material from sticking. The bulkhead and top swing tailgate are also single 4 mm skin pressed abrasive resistant steel material.

Four tab heavy duty bolt on locking bar 25 mm, steel cover plate over bar to stop stones becoming trapped. Rear pillars 100x190 mm box section. Rear wings are N3G steel valance with drop down bolt on galvanised wings with smooth mud flaps, easily changed if damaged.

## Sub-Frame:

The bolt together Kel-Berg sub-frame is constructed from low weight, high tensile steel. This structural steel is high strength and has been developed for use in load-bearing components, whilst saving weight.

This design allows a degree of flexibility within the sub-frame during its normal working duties. It is also fully galvanised to ensure it is long lasting and corrosion free.

## Crane Details:

Installation is fitted with Palfinger Epsilon M125 Classic LC82 crane. Features dual stand up controls with cable controls on diver side. A double access catwalk and platform finished in black.

Crane has a double boom extension with BK057 4.5t rotator, Kinshofer KM 500 L bucket with lifting hooks, two fixed stabiliser legs and ground controls fitted to the O/S. Also features a main cylinder protection guard, rubber bump strip on outer boom, 2 spot lights, emergency stop and load hold valves on the main cylinder.

A rated capacity indicator can be found on controls with LED for 50%, 75% and 100%. Operator is inside invisible safety case. It's finished in KTL primer and painted in RAL 3002 red powder coating.

## Tipping Gear:

Tipping gear is EDBRO TS series. The high tensile steel frame within the TS effectively absorbs side loads imposed by the chassis during tipping, whilst protecting the cylinders from side load. With 50% more torsional stiffness than comparable units, the TS provides ultimate stability for the safest tipping, even in the most demanding operating conditions.

## Auxiliary Items Included:

2 x powder coated handrails fitted O/S of body near rear axle, body raised warning with in cab light and buzzer, conspic markings fitted to conform with current C & U regulations, side guards fitted to both side of the vehicle on galvanised brackets.

Galvanised parts:

- Shovel rack mounted on front bulkhead.
- Bolt on rear push bar.
- Rear under run bumper.

Galvanised bolt on sheet roller cover prepared for sheet system.

Galvanised fixed ladders will be fitted where possible, otherwise folding ladders.

## Electrics:

LED side marker lights mounted below bottom rail. Truck manufacturers rear lights to be used and fitted to galvanised bolt on light brackets.

Rear LED marker lights fitted to tailgate. Body raised warning with in cab light and buzzer.

## Paint:

Prior to fitting, the body is shot blasted and finished in a two pack paint, single flat colour, in RAL code. This comes with a two year anti-corrosion warranty.

## Warranty:

Tipping body:	3 years
PTO + Tipping Gear:	3 years
Body paint:	2 years
Crane:	2 years full + 3, 4, 5 sliding scale structural

Third party components subject to their parties T&Cs (available on request).