



**KEL-BERG GRAB
LOADER INSTALLATION**

**VOLVO FMX 420 8X4
KEL-BERG GRAB LOADER**

Make / Model:

Volvo FMX 420 8x4 Rigid N3G X-High Chassis

Drive Line:

Drive line is fitted with a 12.8 litre diesel D13K420 engine:

- Outputs: 420 hp at 1,400 to 1,800 rpm
- Peak torque: 2,100 nm at 860 to 1400 rpm

Also features an auto AT2612F 12 speed “I-Shift” gearbox, application software - off road. I-Shift economy mode with automatic power switch return, differential and cross locks.

Cab External:

Cab external features the following:

- Translucent external sun visor
- Heavy duty bumper
- Tinted glass
- Electric operated tempered & tinted side windows
- Front & rear mechanical cab suspension and integrated shock absorbers
- Central door locking system
- Insect screen in front of radiator
- Halogen H7 head light c/w headlamp protectors
- Rear lights LED



CHASSIS SPECIFICATION

Ver.1 | Issued
09/21

VOLVO FMX 420 8X4 KEL-BERG GRAB LOADER

Colour:

Cab finished in 1103WHIT winter white. Bumper, mirrors, instep & visor finished in grey. Chassis is finished in grey too.

Cab Interior:

The cab is fitted with following items:

- Continental VDO DTCO 4.0 smart tachograph
- Dashboard is finished in dark beige / rave
- Cruise control
- Manually controlled air conditioning
- Thatcham H2 approved immobiliser
- Reversing alarm
- 3 kg fire extinguisher
- Air drivers seat with 2 arm rests
- SRS drivers air bag

Steel roof & escape hatch electrically operated. Electrically heated and operated main and wide angle mirrors with manually adjusted kerb side mirror. In order to increase direct vision to the side, the main mirrors have no cowlings. Door locking uses manual key.

Additional items: rear cab window, driver side sun visor, central document box, twin cup holders, rear cab upper 300 mm high storage facility.

Continued on next page ...



CHASSIS SPECIFICATION

Ver.1 | Issued
09/21

VOLVO FMX 420 8X4 KEL-BERG GRAB LOADER

High power audio system: RDS radio with CD player that supports MP3/WMA files from CD. Features an integrated bluetooth phone and USB/line inputs. FM/AM antenna, speakers in dashboard and doors.

Dashboard features an integrated 12 inch colour information display.

Chassis:

Chassis height is 300 mm x 8 mm steel web and flange. Chassis frame inner liner from front of bogie to the end of the frame. Exhaust is with fitted horizontal silencer and rear outlet.

A 255 L aluminium fuel tank is located on OS and a 48 L AdBlue tank is mounted on NS, both are fitted with a locking cap. Wheel base is 5,100 mm with 1,400 mm overhang with hinge hole centre 615 mm.

Brake System:

Features drum brakes on front and rear axles with front brake regulating valves (EBS). Fitted with Volvo engine brake and exhaust pressure governor providing enhanced performance due to additional rocker control.



Body Construction:

The body is constructed with durable and hard wearing pressed abrasive resistant steel that is suitable for muck-away, demolition, rubble and aggregate.

The sides are fixed and pressed from 4 mm abrasive resistant steel, along with heavy duty top rails which are folded from the same steel; giving the exceptional strength. The floor is a single 5 mm sheet with angled edges to the side wall, preventing material from sticking.

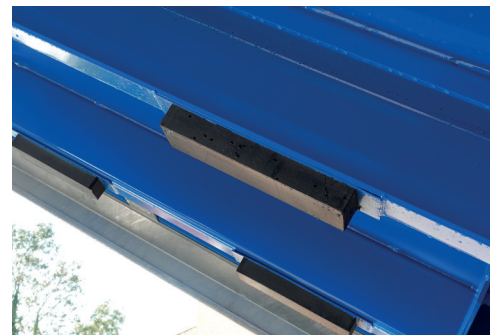
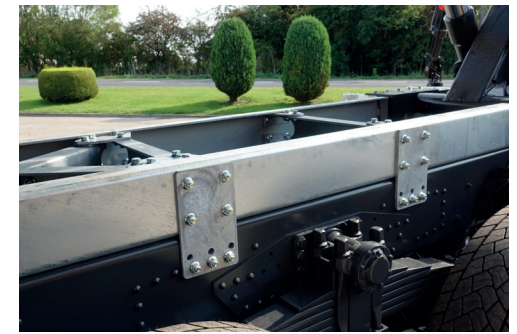
The bulkhead and top swing tailgate are also single skinned 4 mm pressed abrasive steel material.

A 25 mm, four tab, heavy duty bolt is used for the locking bar. A steel cover plate on the bar stops stones becoming trapped. Rear pillars are 100 x 190 mm box sections.

Rear wings are a N3G steel valance with drop down, bolt on galvanised wings with smooth flaps. These are easily changed if damaged.

Sub-Frame:

The Kel-Berg bolt-together sub-frame is constructed from low weight, high tensile steel. This structural steel is high strength and has been developed for use in load-bearing components, whilst saving weight. This design allows a degree of flexibility during normal working duties. The galvanisation ensures a long lasting, corrosion free finish.



Auxiliary Items Included:

Two powder coated handrails are fitted body O/S near rear axle. A body raised warning in-cab light and buzzer is fitted. Conspicuity markings are fitted in accordance with current C&U regulations. Side guards are fitted to galvanised brackets on both sides of the vehicle.

Galvanised parts:

- Shovel rack mounted to front bulkhead.
- Bolt-on rear push bar.
- Rear under run bumper.
- Bolt-on sheet roller cover prepared for sheet.
- Fixed ladders are fitted where possible, otherwise folding ladders.

Paint:

Prior to fitting, the body is shot blasted and finished in a two pack paint. This is a single flat RAL coded colour. This comes with a two year anti-corrosion warranty.

Tipping Gear:

An Edbro TS series tipping gear is fitted. The high tensile steel frame within the TS effectively absorbs side loads imposed by the chassis during tipping whilst protecting the cylinders from side load. With 50% more torsional stiffness than comparable units, the TS provides ultimate stability for the safest tipping even in the most demanding operating conditions.



Crane Details:

The installation is fitted with a Palfinger Epsilon M125 Classic LC82 crane. This features dual stand up controls with cable controls on the driver side. These are accessed using a double access catwalk and platform, finished in black.

The crane has a double boom extension with BK057 4.5 ton rotator, Kinshofer KM500 L bucket with lifting hooks, two fixed stabiliser legs and ground controls on O/S. The crane also features a main cylinder protection guard, rubber bump strip on outer boom, two spotlights, emergency stop and load hold valves on the main cylinder.

A rated capacity indicator can be found on controls with LEDs for 50%, 75% and 100% load. The crane operator is within an invisible safety case. It is finished in KTL primer and painted in RAL 3002 red powder coating.

Electrics:

LED side market lights are mounted below the bottom rail. The truck manufacturers rear lights are used and fitted to galvanised light brackets. Rear LED marker lights are fitted to the tailgate. A body raised warning alarm with in-cab light and buzzer are fitted.

Warranty:

Tipping Body:	3 years	Crane: 2 years full + 3, 4, 5 sliding scale structural.
PTO + Tipping Gear:	3 years	
Body Paint:	2 years	

Third party components subject to their parties
T&Cs (available on request).

