



Make / Model:

DAF XDC 450 FAD 8x4 Rigid Chassis

Driveline:

Fitted with 10.8 litre, multi-torque 6 cylinder Euro 6 MX-11 diesel engine.

- Outputs 330 kW (449 hp) at 1,600 rpm
- Max Torque 2,350 Nm at 900 – 1,125 rpm

Fitted with automatic TraXon 12 speed 12TX2610 overdrive gearbox, ASR (anti-slip regulation), Eco performance, rear driven axle mechanical differential lock. Engine idle shutdown after 5 minutes idle time.

- Gear ratio 12.92 – 0.77
- Axle ratio 3.73

Cab External Features:

- New 2023 aerodynamic cab.
- DAF Digital Vision System - Foldable camera above cab doors with two displays mounted to inside cab.
- Midnight blue translucent external sun visor.
- Large curved front windscreen.
- Double glazed window in cab rear wall.
- Passenger lower door window of tempered single layer safety glass.
- Cab entrance step with anti-slip tread. 3 steps.
- Central door locking system with light checker function. Includes 2 keys.



CHASSIS SPECIFICATION

Ver.1 | Issued
03/24

DAF XDC 450 8X4 KEL-BERG GRAB LOADER

- LED head lights with impact resistant Lexan lens and levelling device.
- LED day time running lights integrated into headlight units.
- LED head and bumper mounted fog lights.
- Maintenance free 4-point mechanical cab suspension with integrated shock absorbers.
- Steel front underrun protection.
- Steel three piece bumper.
- Radiator protection plate.

Colour:

- | | |
|-------------------|---------------|
| • Cab | E1980WHITE |
| • Camera housing | Crystal White |
| • Head lamp panel | Crystal White |
| • Chassis | Grey |
| • Bumper finished | Grey |
| • Grille strips | Black |

Chassis:

Wheelbase is 5,700 mm with 1,650 mm overhang. Chassis is 310 mm x 6 mm steel with full length reinforcement. Horizontal exhaust discharge at the side of DPF/SCR unit low exhaust diffuser. Exhaust discharged to right hand side.

EAS unit behind 2nd front axle on right hand side. Horizontal battery box with 45 L AdBlue tank below at left side of the chassis.



Fitted with 340 L aluminium fuel tank on left hand side.

- Rear underrun protection
- Rear lights LED
- Steel air tanks

Cab Interior:

Cab interior has hexagon decoration with light trim colour on roof and roof console. Panels and below dashboard are grey. Accents are facet black. The dashboard descends towards front windscreen to create more vision with plane finish. Dashboard has extractable table on top of centre console. Centre console has open storage compartment also. 2 x 12V/5A dashboard power supply and 1 USB-A connections.

Driver seat is air suspended, high backed, with armrests and black seat belts. Passenger seat is foldable. Pull down roller blind on driver side. Windows are electric. Interior lighting is LED with dimmable red night driving light and separate spot lights for driver and passenger. Equipped with cruise control. Fitted with leather steering wheel. Includes audible reverse warning system with override switch, and basic engine immobiliser.

Cab is climate control, regulating temperature, air distribution and air conditioning. Fitted with residual heat pump.

Fitted with digital (smart) VDO DTCO tachograph with Global Navigation satellite System (GNSS) receiver and dedicated short-range 2nd axle of



communications (DSRC) unit. DAF Luxury Plus Infotainment System – additional 10.1 inch touch screen display with audio and infotainment functionality.

An FM/DAB/DAB+ radio is integrated in the system as well as streaming functionalities via USB and Bluetooth.

Luxury speaker system – two bass speakers, two tweeters and full range frequency speaker.

Driver performance assistant (DPA) information is shown on 5" colour TFT display in instrument panel

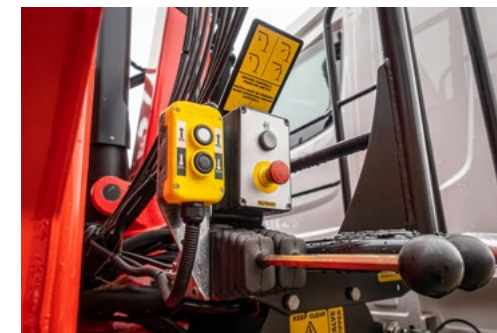
Braking System:

Features ventilated disc brakes front and rear. Dual circuit air system with electronic control (EBS). Twin cylinder air compressor with heated dryer and economy mode. Fitted with MX engine brake – hydraulically operated compression brake assembly integrated in the valve rocker group. Works simultaneously with the exhaust brake.

Electro-pneumatic park brake with auto apply functionality when the driver's door is open and ignition is off. Spring brake cylinder on the 2nd axle of the rear tandem axle.

Electrical Power Supply:

Alternator 110 A, Batteries 2 X 175 aH



Axles & Suspension:

Front axle 167N, 20 mm vertical offset. Parabolic leaf suspension with shock absorbers and stabiliser - Max load 2x 7.1 ton.

Rear spring max load 19.0 t. Brake system designed load 19.0 t.

Double driven rear tandem axles type SR1132T with single reduction and trapezium leaf suspension. Mechanical cross-axle and inter-axle differential locks. Max group load 19.0 tonnes

Power Take Off (PTO):

First gearbox PTO type NH/4c mounted below gearbox countershaft. Gear ration 27/30, direct pump drive.

GVC & GCM:

Chassis weight related technical GVM max 32,000 kg
Driveline related max GCM 35,500 kg class 2

Warranty:

2 year warranty on chassis and 3rd year on driveline. This takes care of all warrantable repairs on the vehicle for two years and on the driveline for a third year together with associated breakdown coverage.

Service & Maintenance

Two options are available at additional monthly cost,
Option 1) Compliance package
Option 2) Full R&M Package
Please ask for a full details or a monthly cost.

Body Construction:

The body is constructed with durable and hard wearing pressed abrasive resistant steel that is suitable for muck-away, demolition, rubble and aggregate.

The sides are fixed and pressed from 4 mm abrasive resistant steel, along with heavy duty top rails which are folded from the same steel; giving the exceptional strength. The floor is a single 5 mm sheet with angled edges to the side wall, preventing material from sticking.

The bulkhead and top swing tailgate are also single skinned 4 mm pressed abrasive steel material.

A 25 mm, four tab, heavy duty bolt is used for the locking bar. A steel cover plate on the bar stops stones becoming trapped. Rear pillars are 100 x 190 mm box sections.

Rear wings are a N3G steel valance with drop down, bolt on galvanised wings with smooth flaps. These are easily changed if damaged.

Sub-Frame:

The Kel-Berg bolt-together sub-frame is constructed from low weight, high tensile steel. This structural steel is high strength and has been developed for use in load-bearing components, whilst saving weight. This design allows a degree of flexibility during normal working duties. The galvanisation ensures a long lasting, corrosion free finish.



Auxiliary Items Included:

Two powder coated handrails are fitted body O/S near rear axle. A body raised warning in-cab light and buzzer is fitted. Conspicuity markings are fitted in accordance with current C&U regulations. Side guards are fitted to galvanised brackets on both sides of the vehicle.

Galvanised parts:

- Shovel rack mounted to front bulkhead.
- Bolt-on rear push bar.
- Rear under run bumper.
- Bolt-on sheet roller cover prepared for sheet.
- Fixed ladders are fitted where possible, otherwise folding ladders.

Paint:

Prior to fitting, the body is shot blasted and finished in a two pack paint. This is a single flat RAL coded colour. This comes with a two year anti-corrosion warranty.

Tipping Gear:

An Edbro TS series tipping gear is fitted. The high tensile steel frame within the TS effectively absorbs side loads imposed by the chassis during tipping whilst protecting the cylinders from side load. With 50% more torsional stiffness than comparable units, the TS provides ultimate stability for the safest tipping even in the most demanding operating conditions.



Crane Details:

The installation is fitted with a Palfinger Epsilon M125 Classic LC82 crane. This features dual stand up controls with cable controls on the driver side. These are accessed using a double access catwalk and platform, finished in black.

The crane has a double boom extension with BK057 4.5 ton rotator, Kinshofer KM500 L bucket with lifting hooks, two fixed stabiliser legs and ground controls on O/S. The crane also features a main cylinder protection guard, rubber bump strip on outer boom, two spotlights, emergency stop and load hold valves on the main cylinder.

A rated capacity indicator can be found on controls with LEDs for 50%, 75% and 100% load. The crane operator is within an invisible safety case. It is finished in KTL primer and painted in RAL 3002 red powder coating.

Electrics:

LED side market lights are mounted below the bottom rail. The truck manufacturers rear lights are used and fitted to galvanised light brackets. Rear LED marker lights are fitted to the tailgate. A body raised warning alarm with in-cab light and buzzer are fitted.

Warranty:

Tipping Body: 3 years
PTO + Tipping Gear: 3 years
Body Paint: 2 years

Crane: 2 years full + 3, 4, 5 sliding scale structural.
Third party components subject to their parties T&Cs (available on request).

