



**MCPHEE
MIXER**

**DAF XDC 450 8X4 MCPHEE
CONCRETE MIXER**

MAKE / MODEL

DAF XDC 450 FAD 8x4 Rigid Chassis

DRIVELINE

Fitted with 10.8 litre, multi-torque 6 cylinder Euro 6 MX-11 diesel engine.

- Outputs 330 kW (449 hp) at 1,600 rpm
- Maxi Torque 2,350 Nm at 900 – 1,125 rpm

Fitted with automatic TraXon 12 speed 12TX2610 overdrive gearbox, ASR (anti-slip regulation), Eco performance, rear driven axle mechanical differential lock.

- Gear ratio 12.92 – 0.77
- Axle ratio 3.73

CAB EXTERNAL

- New 2023 aerodynamic cab.
- Midnight blue translucent external sun visor.
- Large curved front windscreen.
- Double glazed window in cab rear wall.
- Passenger lower door window of tempered single layer safety glass.
- Cab entrance step with anti-slip tread. 3 steps.
- Central door locking system with light checker function. Includes 2 keys.
- LED head lights with impact resistant Lexan lens and levelling device.



- LED day time running lights integrated into headlight units.
- LED head and bumper mounted fog lights.
- Maintenance free 4-point mechanical cab suspension with integrated shock absorbers.
- Steel front underrun protection.
- Steel three piece bumper.
- Radiator protection plate.
- Standard main mirror, wide angle, front view and kerb view mirror.

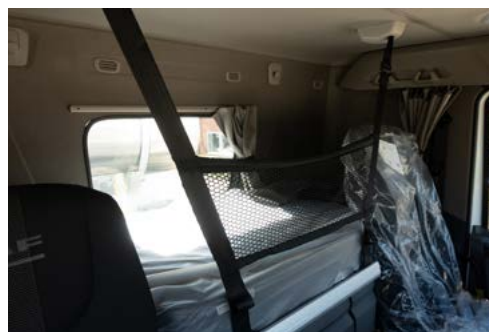
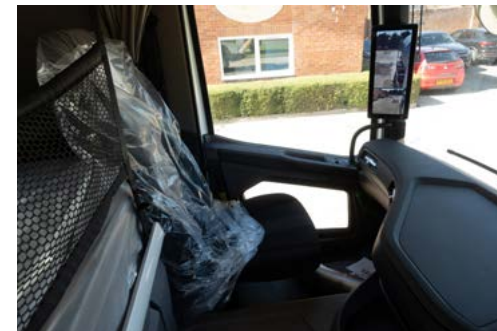
COLOUR

- | | |
|-------------------|---------------|
| • Cab | E1980WHITE |
| • Camera housing | Crystal White |
| • Head lamp panel | Crystal White |
| • Chassis | Grey |
| • Bumper finished | Grey |
| • Grille strips | Black |

CAB INTERIOR

Cab interior has hexagon decoration with light trim colour on roof and roof console. Panels and below dashboard are grey. Accents are facet black. The dashboard descends towards front windscreen to create more vision with plane finish. Dashboard has extractable table on top of centre console. Centre console has open storage compartment also. 2 x 12V/5A dashboard power supply and 3 USA-A connections.

Bunk has “Xtra Comfort” 150 mm thick pocket sprung mattress. There is a drawer for storage underneath the lower bunk with additional storage to left and right of the drawer, accessible with tilted bunk. Curtains along the windscreen and the side windows.



Driver seat is air suspended, high backed, with armrests and black seat belts. Passenger seat is foldable. Pull down roller blind on driver side. Windows are electric. Interior lighting is LED with dimmable red night driving light and separate spot lights for driver and passenger. Equipped with cruise control. Fitted with leather steering wheel. Includes audible reverse warning system with override switch, and basic engine immobiliser.

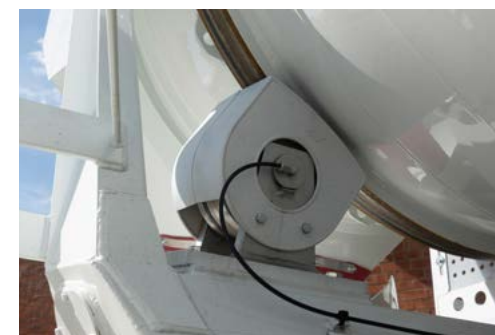
Cab is climate control, regulating temperature, air distribution and air conditioning. Fitted with water-to-air 6kW cab and engine heater with residual head pump and timer.

Fitted with digital (smart) VDO DTCO tachograph with Global Navigation satellite System (GNSS) receiver and dedicated short-range communications (DSRC) unit. DAF Luxury Plus Infotainment System – additional 10.1 inch touch screen display with audio and infotainment functionality, including tracking navigation.

An FM/DAB/DAB+ radio is integrated in the system as well as streaming functionalities via USB and Bluetooth.

Luxury speaker system – two bass speakers, two tweeters and full range frequency speaker.

Driver performance assistant (DPA) information is shown on 5" colour TFT display in instrument panel.



CHASSIS

Wheelbase is 5,700 mm with 1,650 mm overhang. Chassis is 310 mm x 6 mm steel with full length reinforcement. Vertical exhaust discharge at the side of DPF/SCR unit via an exhaust duct with vertical pipe and diffuser behind cab. Exhaust discharged upwards.

Camera at the rear of the vehicle for rear view. Camera images will be shown on the additional display in the dashboard wing belonging to the DAF Infotainment System.

EAS unit and vertical battery box at left side of the chassis. Fitted with 45 L AdBlue tank and 330 L fuel tank right side.

- Rear underrun protection
- Rear lights LED
- Steel air tanks

SAFETY & SECURITY

- Preparation for alcohol interlock system.
- Compliant with UN Regulation R155, concerning cyber security management systems, and UN Regulation R156 concerning software update management systems.



BRAKE SYSTEM

Features ventilated disc brakes front and rear. Dual circuit air system with electronic control (EBS). Twin cylinder air compressor with heated dryer and economy mode. Fitted with MX engine brake – hydraulically operated compression brake assembly integrated in the valve rocker group. Works simultaneously with the exhaust brake.

Electro-pneumatic park brake with auto apply functionality when the drivers door is open and ignition is off. Spring brake cylinder on the 2nd axle of the rear tandem axle.

AXLES & SUSPENSION

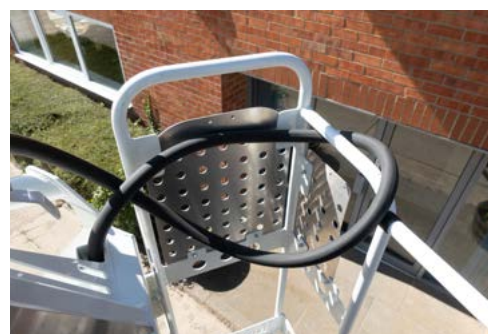
Front axle 167N, 20 mm vertical offset. Parabolic leaf suspension with shock absorbers and stabiliser - Max load 2x 7.1 ton.

Rear spring max load 19.0 t. Brake system designed load 19.0 t/

Double driven rear tandem axles type SR1132T with single reduction and trapezium leaf suspension. Mechanical cross-axle and inter-axle differential locks. Max group load 19.00 tonnes

WHEELS & TYRES

- Front axles tyre size 295/80R22.5 wheels 22.5 x 8.25.
- Driven rear axles the same
- Tyres Goodyear
- Disc wheels aluminium Alcoa brushed – 32 mm mounting holes
- Wheel protection rings with open centre section in silver-grey RAL 9006
- On/off road application



ELECTRICAL POWER SUPPLY

Alternator 110 A

Batteries 2 X 175 aH

POWER TAKE OFF (PTO)

Hardwired gearbox PTO control, no gearbox PTO. PTO switch on dashboard and PTO control valve on chassis.

Rear engine PTO permanently engaged without clutch at position 13 hours. Flange 100 mm.

GVC & GCM

Chassis weight related technical GVM max 32,000 kg

Driveline related max GCM 35,500 kg class 2

WARRANTY

2 year warranty on chassis and 3rd year on driveline. This takes care of all warrantable repairs on the vehicle for two years and on the driveline for a third year together with associated breakdown coverage.

SERVICE & MAINTENANCE

Two options are available at additional monthly cost,

Option 1) Compliance package

Option 2) Full R&M Package

Please ask for a full details or a monthly cost.



Body Description:

The McPhee concrete mixer installation features a 9 m³ HARDOX steel drum with a thickness of 3 mm. the drum sits on steel rollers. The discharge chutes are fitted with steel liners which can be replaced when worn out. The discharge swivel chute is fixed and height adjustable. Additionally, the mixer is equipped with two plastic extension chutes. Rear LED lights are mounted on the rear mudguard stays.

The crows nest can be accessed using a fold-down ladder. The install is equipped with a 350 L water tank which is refilled using 1 ½" BSP inlet valves, one on each side.

The drive system consists of:

- PMP gearbox
- PMP PMB 6.5 B65.1202.4 hydraulic pump
- PMP B3 B00.0003.0 water pump
- PMP PMH M90 MCL.9002.1 hydraulic motor

Ground controls are located at the rear of the mixer and include rev controls, slump meter, a grease bank, and a drum direction lever. A Maddelena water meter is also fitted. The hydraulic system is cooled by an Oesse oil cooler, complete with a fan.

There are two manhole access points on each side of the drum, The rear of the vehicle is marked with Chapter 8 high-visibility markings for road safety compliance. Notably, the vehicle is not fitted with a rear bumper.

